

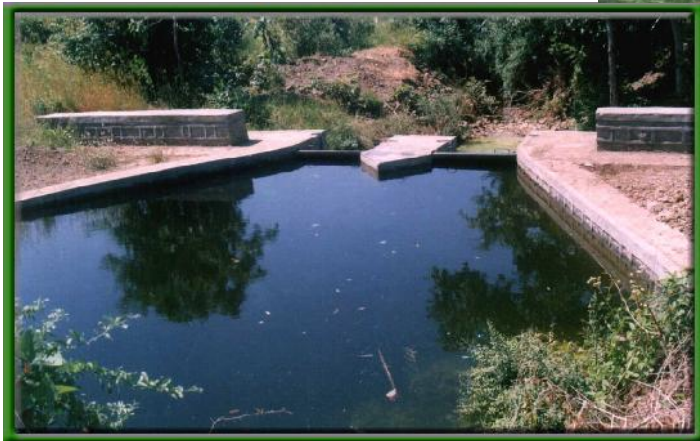
Pictorial view of Watershed projects (1997-2003) of NCHSE



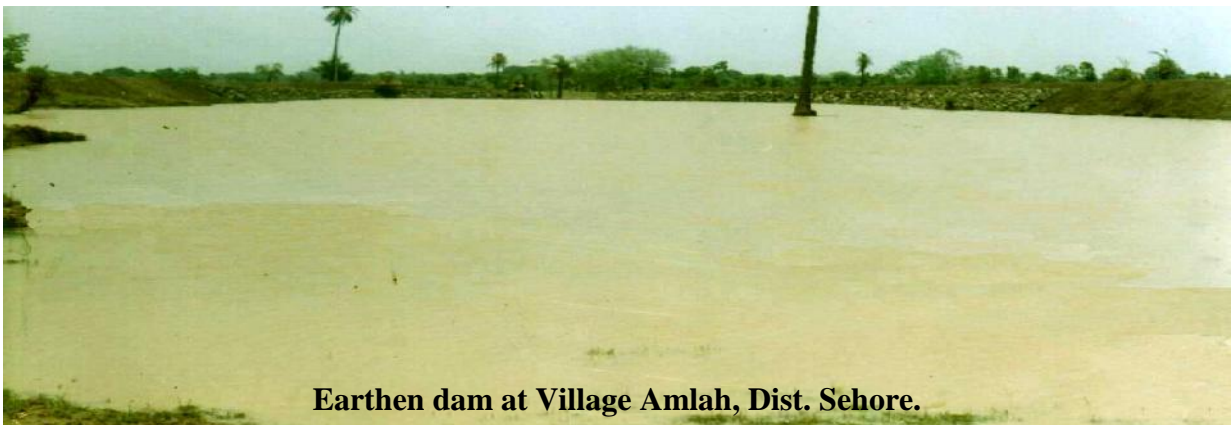
**Earthen dam, Village Nittarri,
Dist. Vidisha under RGM Watershed project**



**Dam Constructed at
Village Gailor Kalan, Jhabua**



**Stop dam constructed at
Village Kudi, Dist. Sehore.**



Earthen dam at Village Amlah, Dist. Sehore.

Pictorial view of Watershed projects (1997-2003) of NCHSE



Irrigated area increased with the help of Earthen Dam (earlier the area being un-irrigated), irrigated area – 6.75 ha. Village – Jamundonga, Pipariya block of Hoshangabad district.



Irrigated area increased with the help of Earthen Dam (earlier the area being un-irrigated), irrigated area – 7.00 ha. Village – Ghana, Pipariya block of Hoshangabad district.



Irrigated area increased with the help of Stop Dam (earlier the area being un-irrigated), irrigated area – 15.00 ha. Block –Sardarpur.



Papaya plantation, Watershed project Dist. Barwani.

